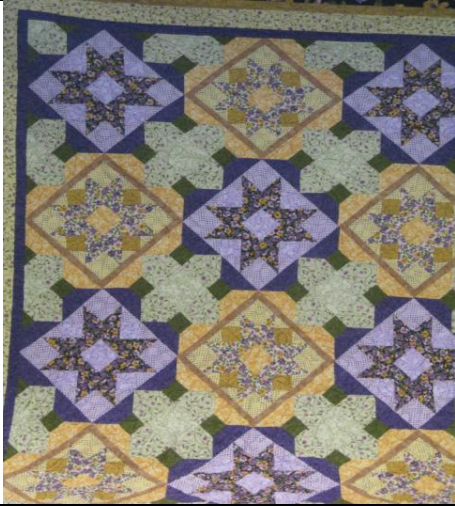
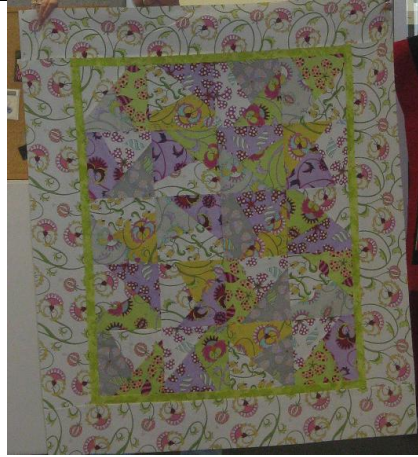


APRIL SHOW N' TELL



Quilt to raise money for a family who recently lost their mother to cancer – Kim Murray, Karen Seckold



Pastels, Peta - Turnbull



Using Mary's Pattern! – Debbie Soccio



Bookmarks for Mother's Day Stall - Karen Dohle



African Quilt – Trisha Salau



Catherine's Chain – Lois Mawby



Charity Quilt – Margaret Murray



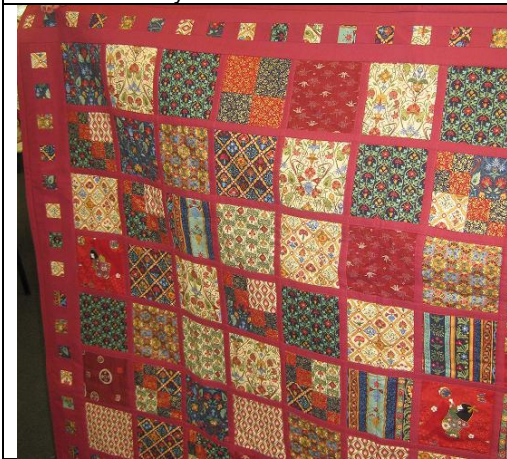
Charity Quilt – Margaret Murray



Estella Churchyard



Flowers and Baskets – Estella Churchyard



First ever quilt made – Marjorie Todd



Redwork – Fiona Dunn



Wendy Charles' Quilt – Chris Gough



Baby Quilt – Kris Schenk



Jelly Roll Quilt – Peta Turnbull